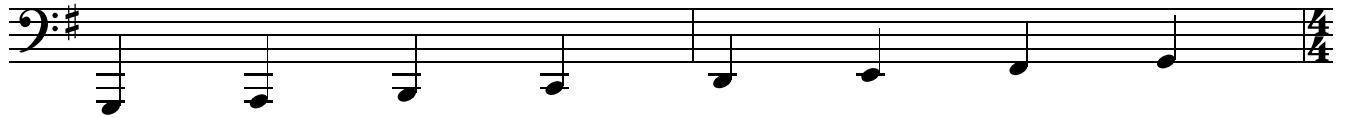


# G SIGHT-READING + RHYTHM EXERCISES

## Level 1

Bass Clef Instruments - Lower Octave - "G" Scale



All of the following exercises utilize notes from the key of concert "G".  
The eighth rest is worth 1/2 of a beat, making it equivalent to an eighth note.

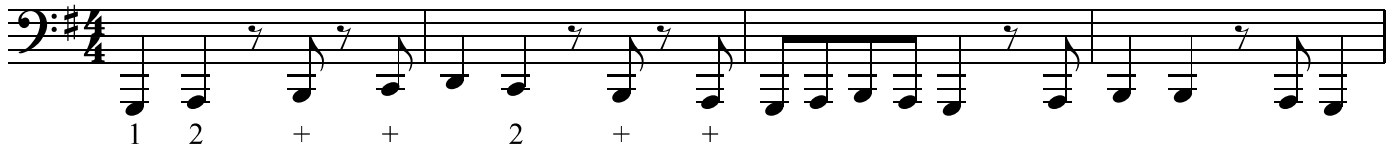
An eighth rest can be notated with either a NUMBER or a "+" sign  
depending on where it lands in the measure.

In all of these exercises, the "eighth rest" will be ON the beat,  
so it should be notated with a number, placed above the note.

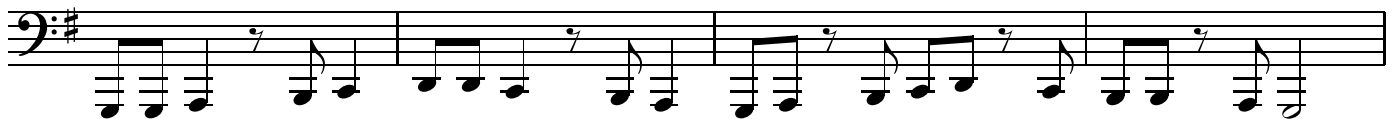
In all of these exercises, the eighth rest will always be followed by a single eighth note,  
which will be labeled with a "+" sign.

3 **A**

3 4 3 4



7 **B**



11 **C**



15 **D**



19 **E**



23 **F**

